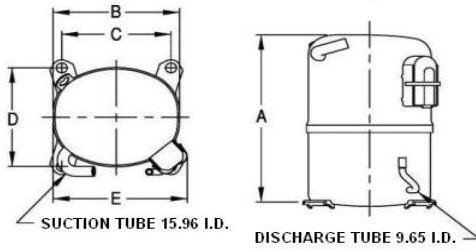




**TEMPORARY**

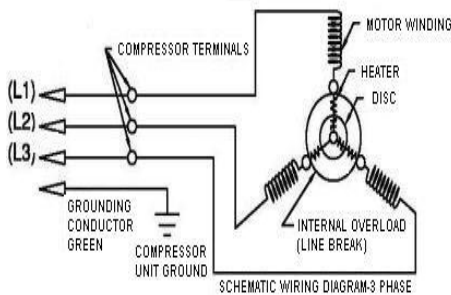
**PRINCIPAL DIMENSIONS - mm**



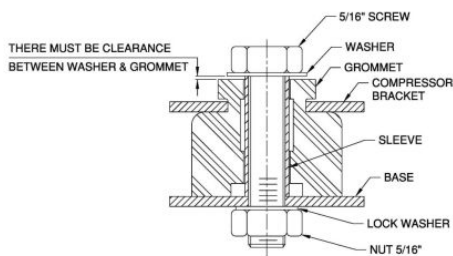
A: 324	B: 223	C: 191	D: 191	E: 239
--------	--------	--------	--------	--------

**SCHEMATIC WIRING DIAGRAM -**

**SCHEMATIC WIRING DIAGRAM 3 PHASE**



**MOUNTING KIT**



Electrical : 380-420 V/50 Hz., 460 V/60 Hz. 3 Phase

**Nominal Performance**

Capacity	11,265 / 13,275 Watts
	38,436 / 45,294 BTU/Hr
	9,687 / 11,415 Kcal/Hr
Power Input	4,085 / 4,890 Watts
Locked Rotor Amps	50.00 / 50.00 Amps
Max Continuous Current	- / - Amps
Rated Load Amps	8.00 / 8.10 Amps
COP	2.76 / 2.71 Watts / Watts
EER	9.41 / 9.26 BTU/W-Hr

**Testing Conditions**

Condensing Temperature	54.40 °C	129.9 °F
Evaporating Temperature	7.20 / - °C	45.0 / - °F
Liquid Temperature	46.10 °C	115.0 °F
Return Gas Temperature	35.00 °C	95.0 °F
Ambient Temperature	35.00 °C	95.0 °F

**Application**

Evaporating Temp. Range	HBP, A/C	@ 0.00 ° C to 13.00 ° C (32.0° F to 55.4° F)
	Heat Pump	- ° C to - ° C (-° F to -° F)
Refrigerant	R404A	
Refrigerant Flow Control	Capillary Tube	
Compressor Cooling	Fan	

**Compressor and Motor data**

Compressor Type	Reciprocating
Displacement	71.00 cc.
Oil Type	Mineral Oil
Oil Charge	1,142.00 cc.
Motor Type	3 PHASE ; 2 Pole 2,850 / 3,450 r/m
Voltage Range	342-462/414-506 Volts 50/60 Hz.

**Winding Resistance at 25 ° C**

L1-L2	2.74 Ohms
L1-L3	2.74 Ohms
L2-L3	2.72 Ohms
Weight with Oil	29.20 Kg.
Weight with Oil and Accessories	29.36 Kg.

**Electrical Components**

<b>Motor Protector</b>	
Type	Internal Overload
Model Number	KGE 658-6
Open / Close	140-150 / 52-70 ° C
1st Cycle trip at 25 ° C	57.0 Amps(start) - Amps(main)
<b>Motor Starter</b>	
Terminal Cover	KGM 901-2
Start Capacitor	No µF No VAC.
Disch Resistor for Start Cap	-
Run Capacitor	No µF No VAC.

**Mounting Kit**

Rubber Grommet	KGM 905
Sleeve Grommet	KGM 903
Washer	-

Since we are constantly improving our product , the specification are subject to change without notice.

REV. DATE	C / N No.
TCN 05-06-13	TCN 0209/13

**Certificate Marks**



**RoHS**

**COMPRESSOR PERFORMANCE TABLE**